



Document Solutions

> PRINT > COPY > SCAN > FAX

**TASKalfa 356ci**  
**TASKalfa 406ci**

COLOR MULTIFUNCTION  
PRODUCT  
FOR A4 FORMAT

# STREAMLINE DOCUMENT PROCESSING, WITH HIGH EFFICIENCY



KYOCERA MyPanel



Mobile Print



PinPoint Scan



Teaching Assistant



Cloud Connect



- Intuitive easy-to-use tiltable 7-inch full-color touch panel.
- Capable to hold up to 3,100 sheets capacity with optional paper feeder\*
- Multiple optional 300 sheets Inner Finisher, 1,000 sheets & 3,000 sheets Finisher.
- High quality with 1200 x 1200 dpi printing.
- Apple AirPrint-enabled and Mopria certified.
- Dedicated Banner Send\*\* function allows scanning up to 1900mm long original with Auto Image Rotation function\*\*\*.
- High capacity 320GB HDD\*\*\*\*.

\*PF-5120 500 sheets x 1 + PF-5140 2,000 sheets x 1

\*\* One-sided original only

\*\*\* Optional with Scan Extension Kit (A)

\*\*\*\* TASKalfa 406ci as standard, TASKalfa 356ci as optional

**TASKalfa**



## Born to be Extraordinary

### KYOCERA Document Solutions is Extraordinary for

- Broad Range of Multifunction Devices and Printers
- Optimized Total Cost of Ownership (TCO)
- Reliable with Long Life Drum and Parts
- New and Advanced Technology

KYOCERA Document Solutions strives to be a company that contributes to the society and demonstrates "Customer First" principle by providing customers with maximum value to increase their satisfaction. By adhering to the mission of producing document management devices that take balance between "Economy" and "Ecology", KYOCERA Document Solutions succeeds to develop document management devices with advanced technologies which help customers to optimize office productivity and efficiency at a low total cost of ownership and, at the same time, improving environmental performance.

## The Brilliant Performer

TASKalfa 356ci and 406ci are equipped with all-rounder functions typically associated with A3 counterparts, that are engineered to suit the demanding needs of small to mid-sized offices. These efficient and robust color multifunctional products offer superior image quality, fast speed and reliability. The easy-to-navigate touch panel provides simple, direct access to the device's commonly used functions. These models are all HyPAS-enabled which facilitate installation of KYOCERA's broad portfolio of powerful business applications right out of the box.

## A Wide Range of Finishing Unit Boost Workplace Productivity

MT-5100 (Optional)

5 bins Mailbox Sorter



JS-5100 Inner Job Separator (Optional)

for up to 100 sheets



DP-5110 Document Processor (Optional)

for one-path duplex scanning and copying

AK-5100: Paper Exit Path for Finisher (Optional)

for attachment with Finisher

DF-5120 Document Finisher (Optional)

for max. 3,000 sheets



DF-5110 (Optional)

1,000 sheet Finisher



DF-5100 (Optional)

300 sheet Inner Finisher



User-friendly 7 inch Color Touch Panel

Easy-to-view, easy-to-navigate and 3 adjustable

Multi-Purpose Tray

for up to 100 sheets



PF-5130 Paper Feeder (Optional)

2 cassettes with 500 sheets each

PF-5120 Paper Feeder (Optional)\*

for up to 500 sheets

PF-5140 Paper Feeder (Optional)

with capacity up to 2,000 sheets (A4/Letter)



## Exceptional Product Functionality in COPY/PRINT/SCAN/FAX

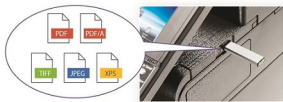
- **Skip Blank Page:** Blank page is skipped during making copies at Document Processor to save unnecessary cost.
- **Dedicated Preset Copy Mode for Special Original Media:** Newspaper Copy, Technical Drawing Copy, ID Copy, Highlighter Copy (reproduce fluorescent colors clearly).



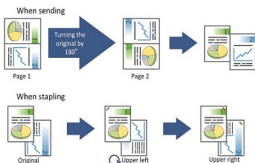
- **Prevent Bleed-thru:** Remove unwanted background when copying or scanning printed double-sized thin paper (e.g. newspaper, NCR paper, and magazine).
- **Carbon Copy:** Print an additional copy or copies of a document from a different media source or using a different media type.
- **Banner Send & Print:** Scan and produce banner with various paper weight in-house anytime in need (One-sided only).



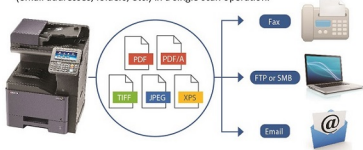
- **USB Scan to/Direct Print:** Scan to or print directly from USB Memory in PDF, PDF/A, TIFF, JPEG or XPS format.



- **Searchable PDF function (Optional):** Scan original paper document, separates texts and images via OCR function to convert texts into text data and composes PDF by combining the images and the text data. This facilitates reuse of PDF file and easily accessible using the search function in PDF file format.
- **User friendly original auto detection:** Align the direction of originals when scan with OCR (Optional) or stapling.



- **High Compressed PDF Size:** Adopt new image analysis technology to achieve high compressed PDF to smaller file size.
- **Scanned Image File Size Check:** Check the actual scanned document size does not exceed limit before actual sending to e-mail.
- **FTP/SMB/Email/Fax Multi-Sending:** Send document to different destinations (email addresses, folders, etc.) in a single scan operation.



- **Simple Fax Forwarding:** Forward any incoming fax to other destinations by Email, SMB or FTP (Optional).



- **i-FAX Sending (Optional):** Send and receive i-FAX without the mail service by installing Direct SMTP function.
- **Job Skip:** Automatically prioritize the error print job to avoid machine come to a halt in case of

1. Paper empty in specific tray
2. Mismatched paper size
3. Mismatched media type

Received Order Order of Received Jobs					JOB Execution Order Order of Printed Jobs				
Sequence	Job	Paper Size	Status		Sequence	Job	Paper Size	Status	
1	0001	A4	NG		1	0001	A4	OK	
2	0002	A4	OK		2	0004	A4	OK	
3	0003	A4	NG		3	0001	A4	NG	
4	0004	A4	OK		4	0002	A4	NG	

- **Job Finish Notice:** Send email notification to specified user when a copy/scan job is completed.





## Fast and Simple Operation

- **Intelligent Control Panel:** Excellent clarity 7 inch color touch panel display with swivel type operability similar to smart phone and tablet and tilttable up to 90 degree.
- **Home Screen:** All commonly used functions and applications are found on default Home Screen. The Home Screen can be customized easily to meet different use (or Group User) needs for immediate access to commonly used functions.
- **Printer Driver's Quick Print Tab:** Create and save frequently used custom profiles as graphic icons to allow programming of complex jobs in one click.
- **Custom Box:** Ease-of-use Custom Box provides long term job storage at device, allowing users to securely print and store jobs on the device and output them when required.
- Card Reader and USB keyboard are seamlessly built in with the mainframe.

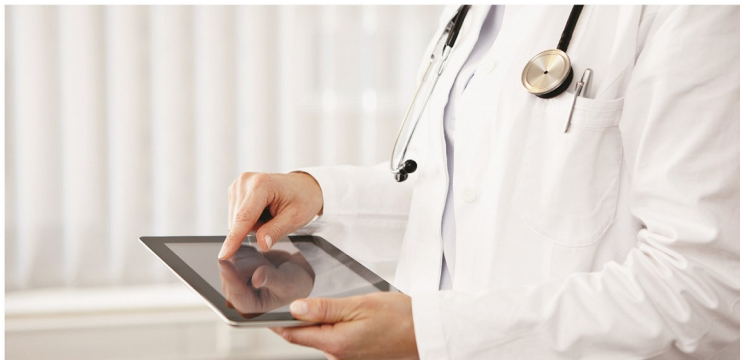


## Superior Image Quality

- **Superior Image quality**  
1,200 x 1,200 dpi print resolution.  
Contrast selection with copy/scan.
- **Multiple Image Adjustment Tools for optimal output:**
  - **Color Optimizer at KYOCERA KX Driver:** Allow users to adjust the pixels near the color value or color space of defined areas instead of the entire image by selecting 2 from 3 parameters (Hue, Light, Saturation) and add up to 10 colors in each adjustment settings.

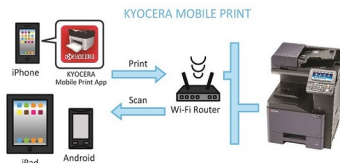


- **Print Gray with Black Toner:** Improve text recognition and decreases color shadowing to reproduce accurate grayscale image.

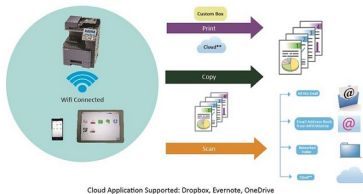


## Innovative KYOCERA Mobile & Cloud Solutions

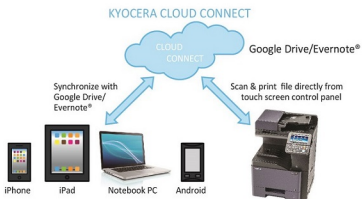
- KYOCERA Mobile Print:** An app-based solution that enables users to simply and conveniently print documents, web pages, and images on demand from virtually anywhere, on their Apple and Android smartphone and tablet devices to select KYOCERA MFPs and printers. Users can also scan files and images from same MFPs to their mobile devices. Our devices also support AirPrint for iPhone and iPad.



- KYOCERA MyPanel:** Use smartphone or tablet to connect a compatible networked KYOCERA printing device on your local Wi-Fi network wirelessly. Users can perform COPY/PRINT/SCAN from Custom Box or Cloud\*\* by mobile devices with personalized settings.



- KYOCERA Cloud Connect (Optional):** Retrieve and print files in Google Drive and Evernote®, a cloud service provider, directly from any KYOCERA HyPAS-enabled MFPs. Users can even upload scanned files directly to Google Drive and Evernote® – directly from the MFP, without going through a computer..





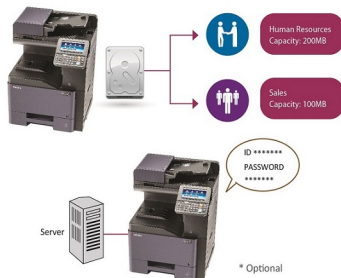


## Stay Safe and Secure

- **Password Protection Setting:** Allow administrator to set Password Policy to limit user access to designated capacity.

- **Private Print:** Release print job at the device by entering a preset four-digit access code when making a print at KYOCERA KX Driver.

- With the aid of **Network Authentication**, IT Department can manage user authentication easily by incorporating with centralized Authentication Server (NTLM, Kerberos, KYOCERA Net Manager\*).

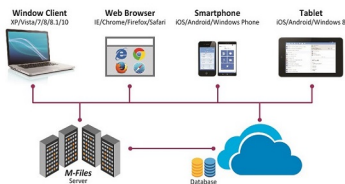


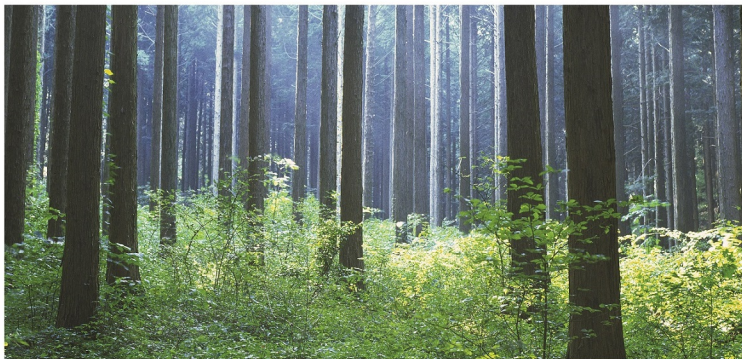
- **FAX Memory Overwrite (Optional):** Erase FAX memory after sending or receiving for confidentiality.

- **Security Watermark:** Distinguish original from copies and provides protection for sensitive document against duplication.

- **M-Files (Optional):** Manage all stuff e.g. documents, projects and business processes etc and adds intelligence by combining it with information from other systems (like SharePoint, Salesforces and SAP). This ensures you always find what you need, no matter what system you are using.

- **KYOCERA Data Security Kit (Optional):** Encrypt data before storing in the hard drive and automatically overwrite all data stored in the hard drive when the data becomes unnecessary.





## Eco-Friendly

### Design for energy savings

- **Weekly Timer:** Allow administrator to preset the machine on and off time to maximize power savings.
- **EcoPrint:** Flexible EcoPrint setting to consume less energy and toner.
- **Energy Saver:** 1.6w or less power consumption at Energy Saver Mode.

### Design for a better environment

- Leading Long-life Mega Surface Amorphous Silicon (A-Si) Drum (TASKalfa 406ci), developer and replacement parts.
- Parts for Recycling.
- Non-toxic Materials.
- Quiet operation design for a comfortable Working Environment.



Eco Mark (Japan)



EcoLeaf Environmental Label (Japan)



Law on Promoting Green Purchasing (Japan)

KYOCERA Document Solutions has been actively promoting the acquisition of various environment labels, aiming to provide products that are safe and comfortable for our customers to use and have minimal environmental impact.

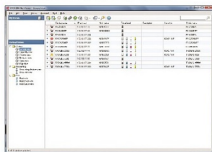
## Minimize Management Costs

### Smart utilities for managed print and minimize related device management costs.

- **KYOCERA Command Center RX:** By using a web browser, the authorized administrator can access the built-in KYOCERA Command Center RX and check the operation status of the device, toner level, paper availability, as well as change settings related to security, network printing and advanced network setting etc.



- **KYOCERA Net Viewer:** A comprehensive network management tool used to monitor, maintain, and update up to 100 network printing devices locally and remotely. Through KYOCERA Net Viewer, administrators can simply install and update firmware on all KYOCERA connected devices while easily monitoring printed black/color pages, device configuration, accounting, toner usage, and alerts. By implementing KYOCERA Net Viewer, the manpower required to monitor your connected devices is greatly reduced.



- **KYOCERA Net Manager (Optional):** Protect confidential data, manage & control the overall output (copy/print/scan) and get detailed reports. Users can keep an overview of personal printing jobs with web browser. It greatly simplifies scanning processes as it automatically displays a set of personalized options.

If you add the Card Authentication Kit (Optional) for KYOCERA Net Manager, you are able to swipe your ID Card to get your print document directly. User Administrator can also set the IC Cards to allow quick and secure access with pre-defined user restrictions such as color output restrictions and output quota.



			Main Specifications	
Model			TASKalfa 356ci	TASKalfa 406ci
Main Function			Copy, Print, Scan, Fax (Optional)	
Writing Method			Semiconductor Laser	
CPU			P1022 (Dual Core) 800 MHz	
Print Speed (A4)	Simplex (Mono/Color)		35/35 cpm	40/40 cpm
Scanning Speed (A4) 300dpi	DP-S100 (Mono/Color)	Simplex	60/40 cpm	
Scanning Speed (A4) 300dpi Dual Scan	DP-S110 (Mono/Color)	Duplex	26/17 ipm	
		Simplex	60/40 ipm	
		Duplex	120/80 ipm	
Memory			Standard 2GB (Max. 2GB)	
SSD/HDD Capacity			SSD 8GB (Std)/HDD 320GB (Opt)	HDD 320GB (Std)
Warm Up Time			24 seconds	
Paper Capacity			500 sheets (Cassette) + 100 sheets (MPT)	
Paper Size			3,100 sheets (Main Unit + PF-S120 + PF-S140 + MPT)	
Paper Weight			Min. A6R - Max. A4 (Legal)	
Duplex Printing			Min. A6R - Max. A4 (Legal) & Banner Print of 216mm x 1,220mm	
Output Capacity			60 – 220 g/m <sup>2</sup>	
Control Panel			60 – 220 g/m <sup>2</sup>	
Document Processor			Paper size: A5R – A4 (Legal); Paper weight: 60 – 220 g/m <sup>2</sup>	
Dimension (W x D x H) (Main Unit)			Max. 500 sheets face-down	
Weight (Main Unit)			7 inch Color Touch LCD Panel	
Power Consumption (Standard configuration)			Optional (Max. 75 sheets RADF Type/One-path duplex scan Type)	
Noise (ISO7779/ISO9296)			550mm x 507mm x 612.8mm (without DP)	
Copy/Print Mode			Approx. 48 kg (without DP)	
Stand-by Mode			752W or less	
Energy Saver			110W or less	
52dB(A)			1.6W or less	
30dB(A)			53.5dB(A)	
			Copy Functions (Standard)	
Copy Size			Max. A4 (Legal) – Min. A6R	
Resolution			600 x 600 dpi	
First Copy Time (Mono/Color)			5.9 sec/7.3 sec	5.8 sec/6.9 sec
Zoom Ratio			25% – 400% (1% per Step)	
Manual			7RSE	
Pre-defined			1 – 999	
Multiple Copy			Print Functions (Standard)	
			9600 x 600 dpi level; 1200 x 1200 dpi	
Resolution			PDL PRESCRIBE, PCL6 (PCL-5c, PCL-XL), KPDL3 (PostScript 3 compatible), PDF, XPS, OpenXPS	
PDL			5.5 sec/6.5 sec	
First Print Out Time (Mono/Color)			5.4 sec/6.4 sec	
Supported Protocol			TCP/IP, IPv4, IPv6; HTTP, LPD, FTP, IPP, RawPort, LPT, SMTP, DHCP, SMTP, POP3, DNS, SNMPv1/v2, WSD Scan/Print, Apple Bonjour	
Operating System Supported			Windows Server 2003, Windows Server 2008, Windows Server 2008 R2, Windows Server 2012, Windows XP, Windows Vista, Windows 7, Windows 8, Windows 10, Apple Macintosh OS 10.x or later, Linux	
Interface			USB2.0 High Speed; 1000BASE-T/100BASE-TX/10BASE-T; USB Host interface (USB Host) x 3	
USB Memory Printing			Standard	
USB Memory Printing Format			TIFF, JPEG, PDF, XPS	
Mobile Printing			AirPrint, Mopria, KYOCERA Mobile Print	
			Scan Functions (Standard)	
Color Selection			Auto Color (Color/Gray); Auto Color (Color/B&W); Full Color; Grayscale; Black & White	
Resolution			600dpi, 400dpi, 300dpi, 200dpi, 200x100dpi, 200x400dpi	
File Format			TIFF, JPEG, XPS, PDF (MMR/ JPG/ High-compression PDF), PDF/A, Encrypted PDF, Searchable PDF(Optional)	
Image Type Mode			Text, Photo, Text + Photo, OCR	
Transmission Type			Scan to SMB; Scan to E-mail; Scan to FTP or FTP over SSL; Scan to USB; TWAIN Scan; WSD Scan; WIA	
Address Storage			2,000 addresses (Common address list), 500 groups (Group address list)	
			Fax Functions (Optional)	
Original Size			Max. A4 (Legal) – Min. A6 (Statement)	
Coding Method			MMR, MR, MH, JBIG	
Transmission Speed			33.6 kbps	
Memory			12MB	
Dual Fax			Yes (Fax System 10 x 2 units required)	
			Consumables & Options	
Toner Kit			TK-5209 (C/M/Y/K)	TK-5219 (C/M/Y/K)
Maintenance Kit			MIK-5205 (A/B); MIK-3140 (for DP-S100); MIK-5200 (for DP-S110)	MIK-5215 (A/B); MIK-3140 (for DP-S100); MIK-5200 (for DP-S110)
Document Processor			DP-S100: 75 sheet RADF Type; DP-S110: 75 sheet One-path duplex scan Type	
Paper Feeder			PF-S120: 500 sheet x 1 Paper Feeder; PF-S130: 500 sheets x 2 Paper Feeder; PF-S140: 2,000 sheets x 1 Paper Feeder (A4/Letter)	
Data Security			Data Security Kit(E)	
Card Authentication			Card Authentication Kit(B)/ Card Reader Holder 11	
Gigabit Ethernet Board			IB-50	
Storage Device			HD-11: 320GB (TASKalfa 356ci only)	
Finisher			J5-S100: Inner Job Separator; DF-S100: 300 sheet Inner Finisher; AK-S100: Attachment Kit; DF-S110: 1,000 sheet Finisher; DF-S120: 3,000 sheet Finisher; PH-S110: Punch Unit; MT-S100: 5 bins Mailbox Sorter; Staple: SH-10	
Fax System			Fax System 10	
Internet FAX			Internet FAX Kit(A)	
Embedded OCR			Scan Extension Kit(A)	